
**PUBLIC SCHOOLS of
BROOKLINE**

Advisory Panel 4:
Public Health, Safety, & Logistics

Meeting Slides

May 14, 2021

Community Benchmarks - Status

Benchmark (each measured over prior 14 days)	Status 4/21/21	Status 4/28/21	Status 5/5/21	Status 5/12/21
Avg. daily new case count in Brookline = <10 per 100k people	8.2	5.8	4.5	3.6
Avg. daily new case count in Mass. = <10 per 100k people	24.7	20.0	15.9	12.5
Avg. test positivity rate in Brookline = <5.0%	0.67%	0.52%	0.45%	0.45%
Avg. test positivity rate in Massachusetts = <5.0%	2.30%	2.01%	1.73%	1.48%

Panel 4 selected these four community transmission benchmarks in August 2020 as triggers for focused evaluation and discussion of whether changes in operations are warranted, not as definitive indicators of in-school risk or thresholds for automatic action. Research and PSB-specific data since that time have convincingly shown that in-school transmission risk can be kept very low even at high levels of community case incidence.

MA DPH Color Scale



Incidence Rate Color Table
 Massachusetts Department of Public Health COVID-19 Dashboard - Thursday, November 12, 2020
Average Daily Incidence Rate per 100,000 Color Calculations

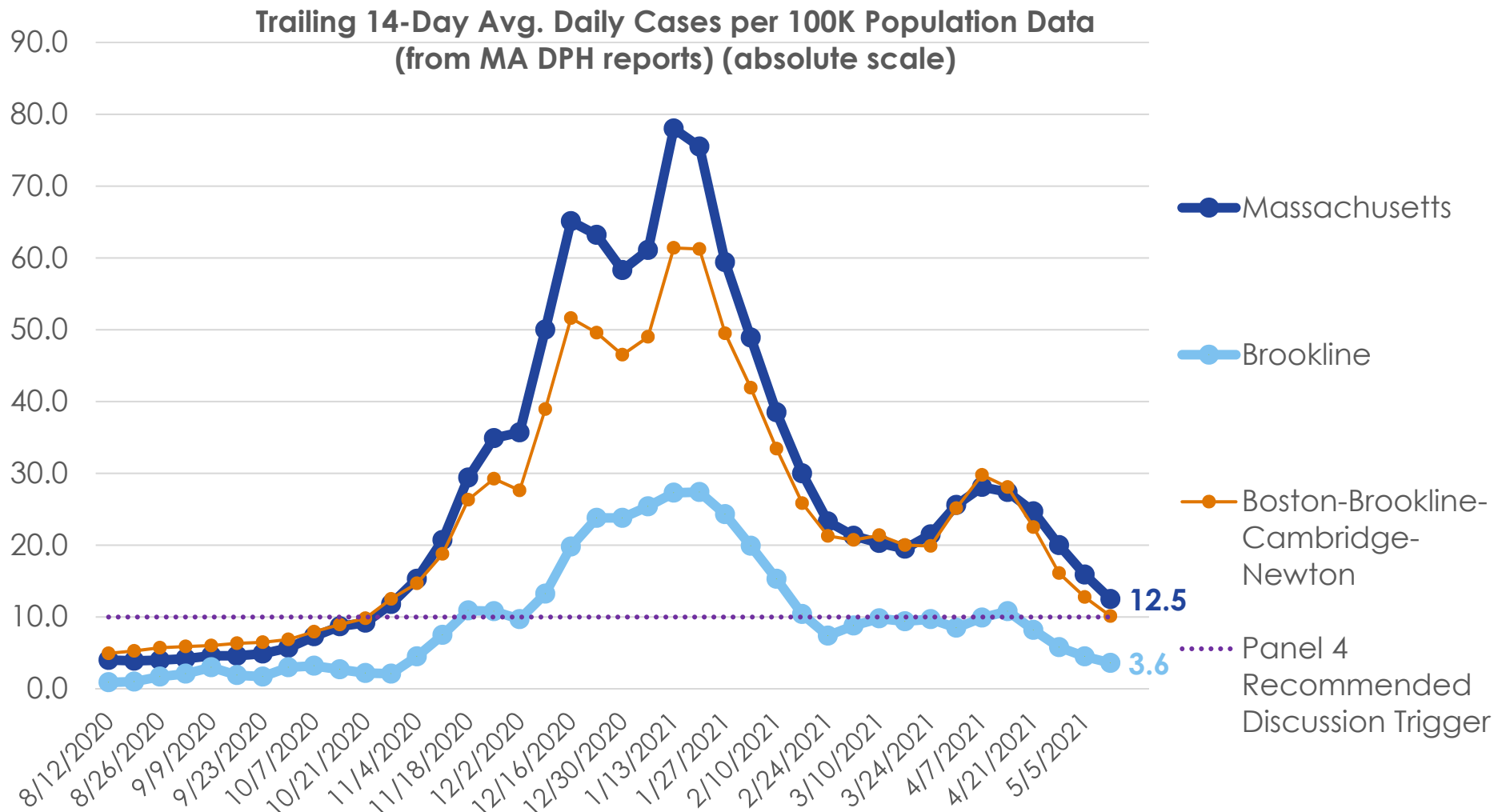
Group	Population		
	Under 10K	10K-50K	Over 50K
Grey	Less than or equal to 10 total cases	Less than or equal to 10 total cases	Less than or equal to 15 total cases
Green	Less than or equal to 15 total cases	<10 avg cases/100k AND >10 total cases	<10 avg cases/100k AND >15 total cases
Yellow	Less than or equal to 25 total cases	≥10 avg cases/100k OR ≥5% pos rate	≥10 avg cases/100k OR ≥ 4% pos rate
Red	More than 25 total cases	≥10 avg cases/100k AND ≥5% pos rate	≥10 avg cases/100k AND ≥4% pos rate

Brookline is here as of 5/12/2021 (green)

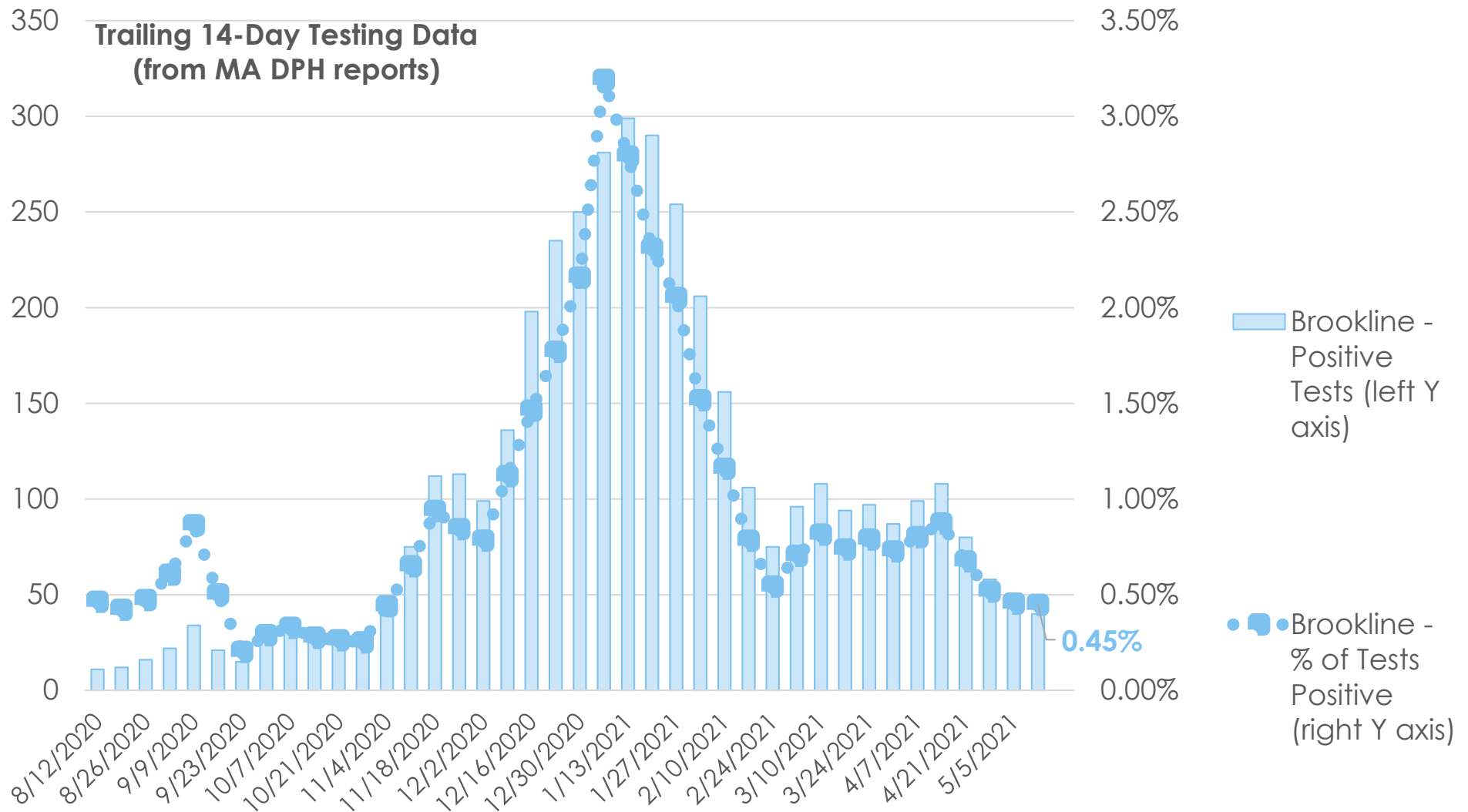
Brookline's population is ~60,000

As of 11/5, DPH is using 2019 population estimates derived from a method developed by the University of Massachusetts Donahue Institute. The 2019 estimates are the most currently available data.

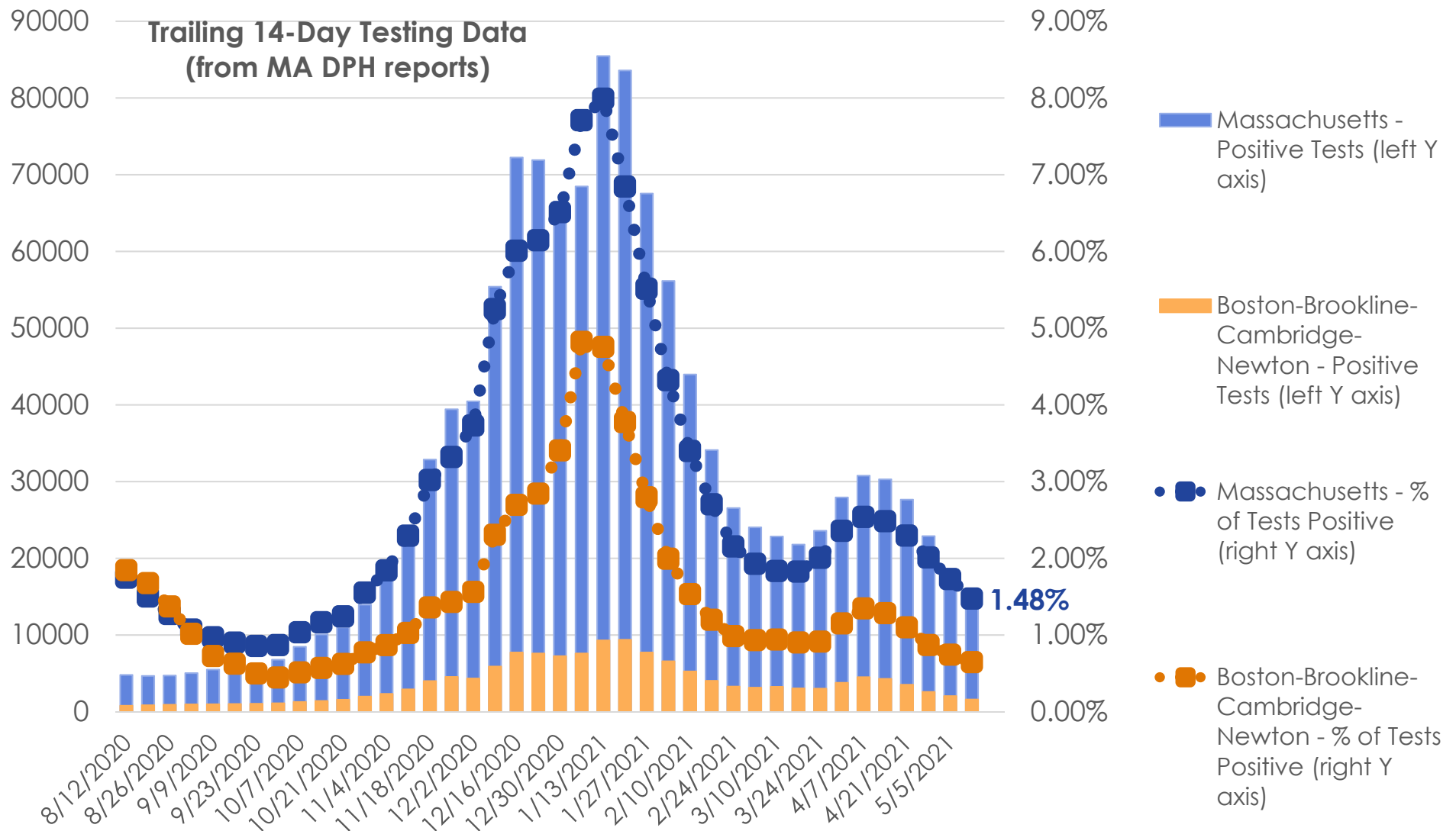
Trends: Avg. Daily New Cases per 100k



Trends: Test Positivity (Brookline)



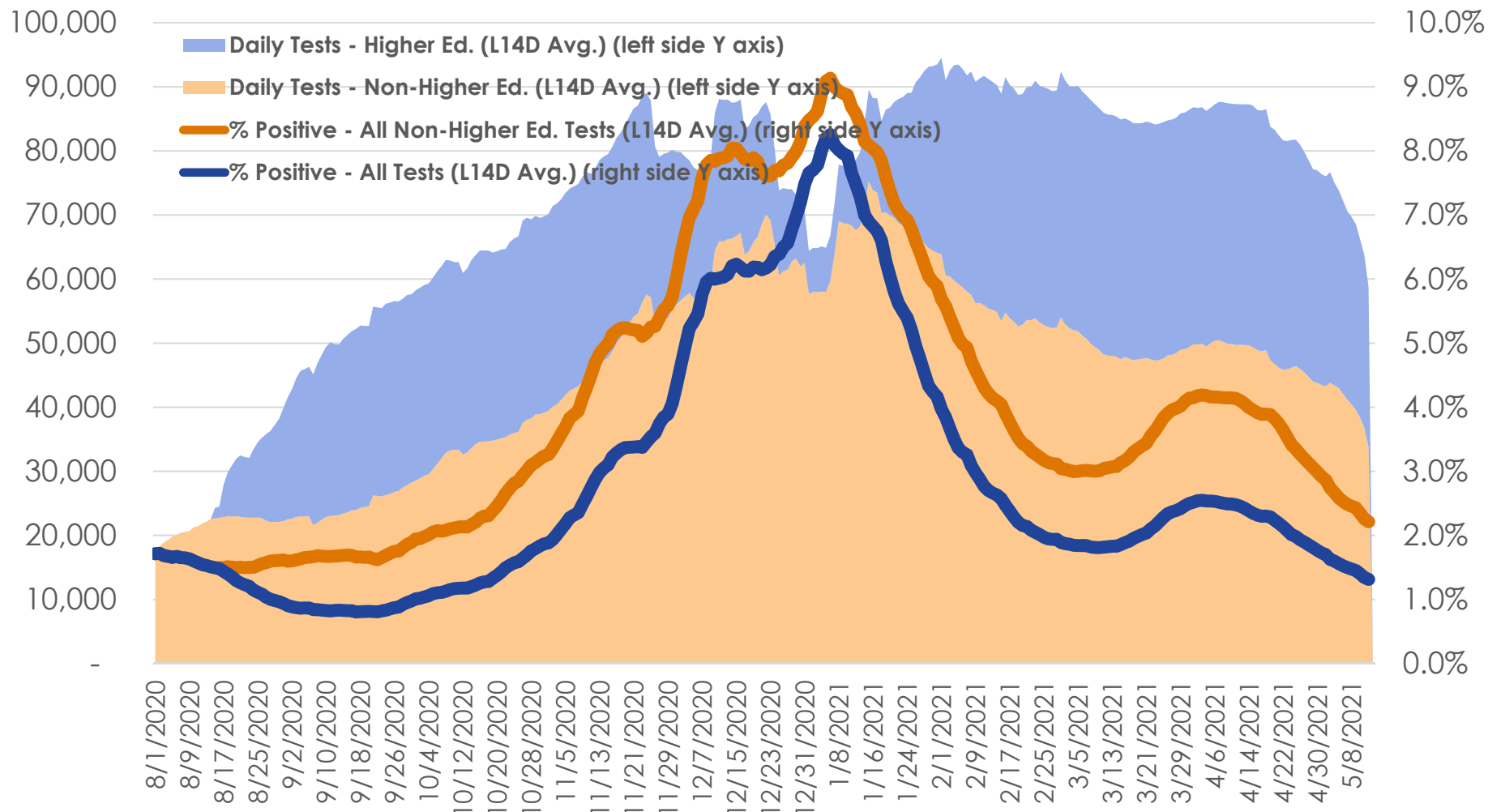
Trends: Test Positivity (Statewide)



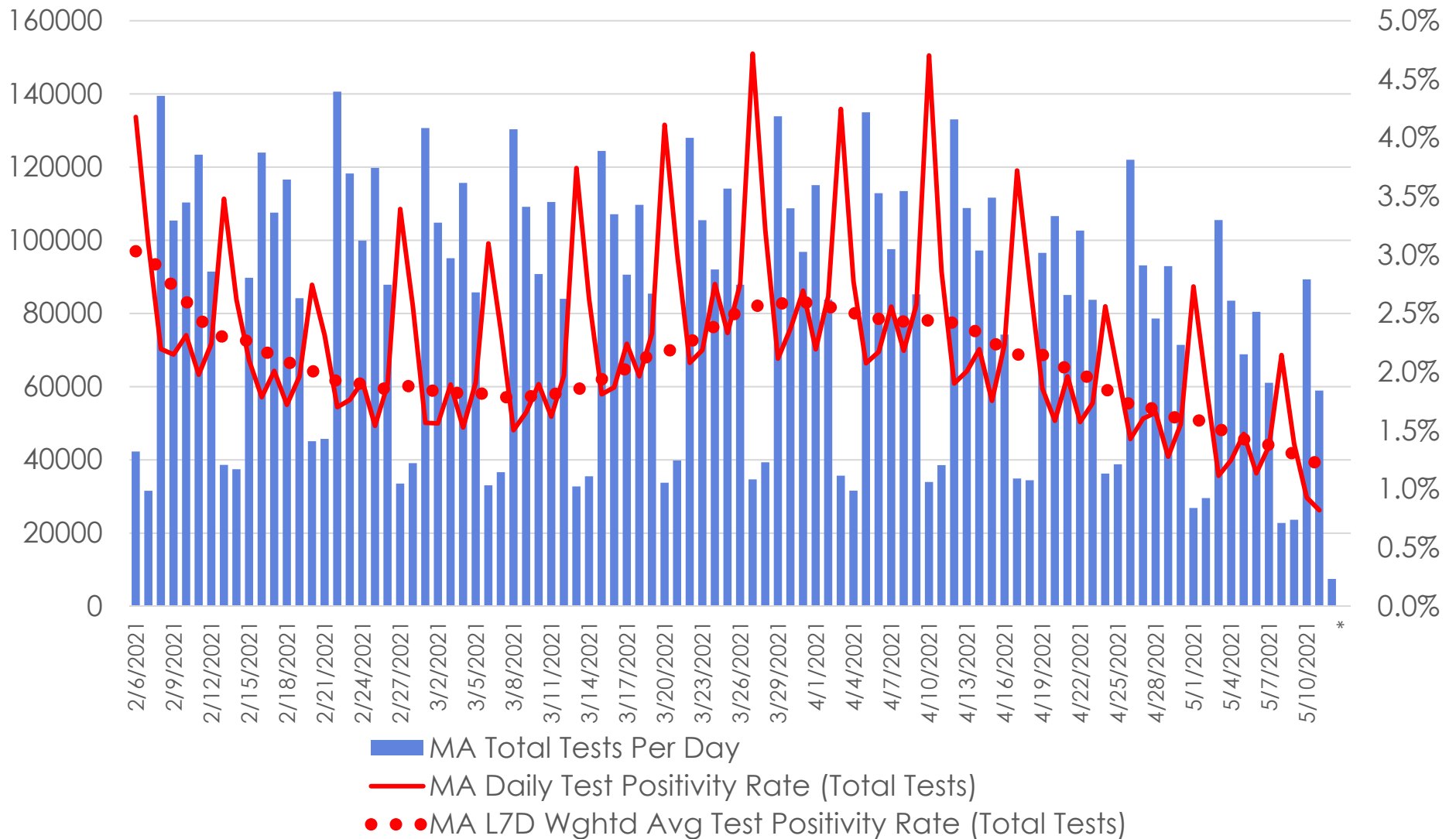
Data source: <https://www.mass.gov/info-details/covid-19-response-reporting>

Trends: Test Positivity and Testing Volume (Statewide)

MA Statewide Test Positivity and Volume

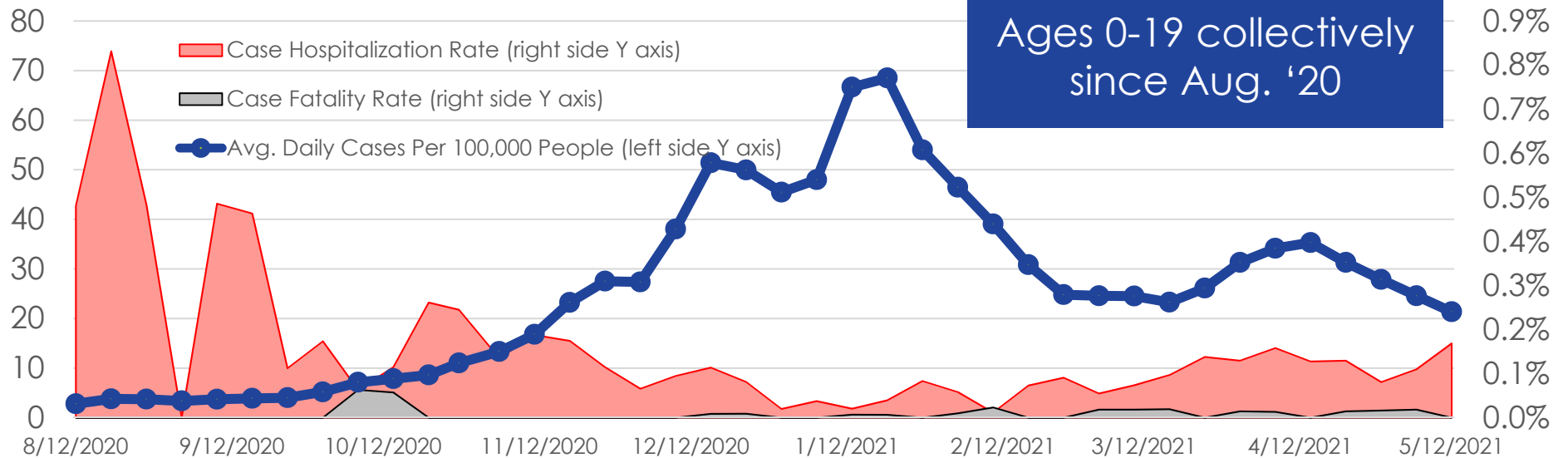


Trends: Daily Test Volumes and Positivity (Statewide)



Data source: <https://www.mass.gov/info-details/covid-19-response-reporting>

Trends: 0-19 Year-Old Age Cohort (MA Statewide)



More specific, for period of 4/25 – 5/8/2021:	Avg. Daily Cases/100k	Case Hospitalization Rate (approx.)	Case Fatality Rate (approx.)
<5 yo	14.9	0.1%	0.00%
5-9 yo	20.3	0.3%	0.00%
10-14 yo	22.9	0.3%	0.00%
15-19 yo	25.9	0.0%	0.00%
All ages (incl. vaccinated people)	14.4	0.8%	0.93%

Data source: <https://www.mass.gov/info-details/covid-19-response-reporting>

Public Schools of Brookline Case Counts: Trends Over Time

Data Last Updated: 5/14/21

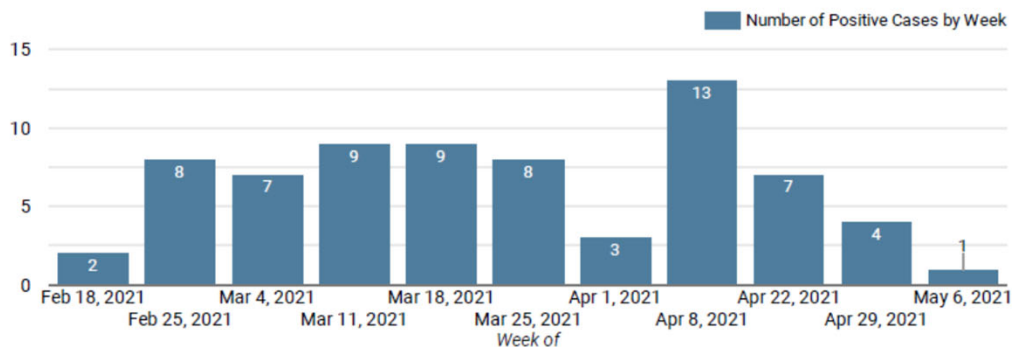


COVID-19 CASES: DISTRICT DASHBOARD

Dashboard outlines number of positive COVID-19 cases in the PSB school community by week and learning model. For the purpose of this dataset, weeks run **Friday to Thursday**.

Source: Public Schools of Brookline School Health Services Department

Number of Positive Cases, by Week*



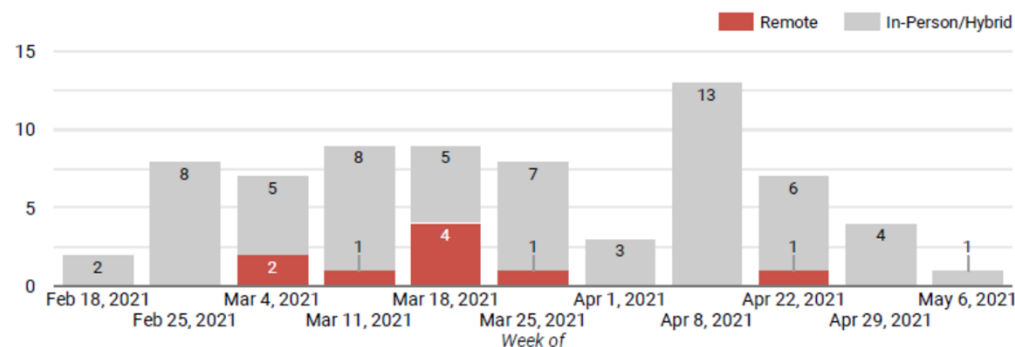
TOTAL PSB CASES TO DATE*: 300

Remote: 35
Hybrid/In-Person: 265

Total among school-based students and staff: 296

*Testing paused from 4.16 - 4.22 due to April Vacation.

Number of Positive Cases, by Week and Learning Model



TOTAL CLOSE CONTACTS: 376 connected to 70 cases**

Total positive cases with no close contacts** at school: 206

**Close contacts are defined as anyone who has been within 6 feet of an positive case for at least 15 minutes during the infectious period.

Public Schools of Brookline Case Counts: By School

Data Last Updated: 5/14/21



COVID-19 CASES: SCHOOL BY SCHOOL DASHBOARD

The table outlines the number of positive COVID-19 cases by week and the number of cumulative cases for the year at each school. For the purpose of this dataset, weeks run **Friday to Thursday**.
Source: Public Schools of Brookline School Health Services Department

Number of Positive Cases, by School & District Offices (Week of 5/6 - 5/13)

School/Building -	Weekly Positive Cases	Cumulative Positive Cases	Close Contacts	Cases with Close Contacts
BEEP @ Beacon	0	3	-	-
BEEP @ Clark	0	2	-	-
BEEP @ Lynch	0	1	-	-
BEEP @ Putterham	0	3	-	-
Baker	0	39	-	-
Brookline High School	0	79	-	-
Driscoll	0	17	-	-
Florida Ruffin Ridley	0	26	-	-
Heath	0	12	-	-
Lawrence	0	26	-	-
Lincoln	0	26	-	-
Pierce	1	35	12	1
Remote Learning Academy K-8	0	12	-	-
Runkle	0	18	-	-
Total*	1	299	12	1

*1 staff case shared between schools during week of 1.28-2.4

School/Building	Weekly Positive Cases	Cumulative Positive Cases	Close Contacts	Cases with Close Contacts
District Office	0	4	-	-

Chart source: <https://sites.google.com/psbma.org/psb-reopening-hub/dashboard>

Public Schools of Brookline Case Counts: Students (By Grade) and Staff



COVID-19 CASES: GRADE LEVEL AND STAFF DASHBOARD

The table outlines the number of positive COVID-19 cases by week and the number of cumulative cases for the year at each school. For the purpose of this dataset, weeks run **Friday to Thursday**.
Source: Public Schools of Brookline School Health Services Department

Total Number of Positive Cases, by Grade Level and Staffing (Week of 5/6 - 5/13)

Grade Level	Weekly Positive Cases	Cumulative Positive Cases
BEEP/Pre-K	0	5
Kindergarten	0	23
1st Grade	0	20
2nd Grade	0	13
3rd Grade	0	12
4th Grade	0	11
5th Grade	0	14
6th Grade	0	15
7th Grade	0	13
8th Grade	1	24
9th Grade	0	11
10th - 12th Grade	0	49
Staff (School-Based)*	0	84
Staff (District Office)	0	4
Total	1	298

*1 staff case shared between schools during week of 1.28-2.4

Public Schools of Brookline Case Counts: Asymptomatic Testing Program Results

Data Last Updated: 5/14/21



COVID-19 CASES: STAFF ASYMPTOMATIC TESTING

The table outlines the test results of our COVID-19 pooled testing program. For the purpose of this dataset, weeks run Friday to Thursday.

Source: Public Schools of Brookline School Health Services Department

Staff Asymptomatic Testing Program Results

On Friday, January 15, 2021, the Public Schools of Brookline launched the voluntary staff COVID-19 PCR testing program for all "student-facing staff". This program is strictly for asymptomatic staff. This program is piloted by the Broad Institute, with tests collected and brought to each school. The turn-around time for these test results is within 24 hours.

The asymptomatic testing was paused from February 5 through February 26 as the district expanded the program to include pooled testing with students with support from the Massachusetts Department of Elementary and Secondary Education (DESE). Pooled testing involves mixing several test samples together in a "pool" and then testing the pooled sample with a PCR test for detection of SARS-CoV-2. Staff were put into pools of 5. The first week of this program launched on Monday, March 1, 2021. Testing was paused for the week of April 19 due to April Vacation.

Week of	Tests Processed	Positive Results	TNP (Tests Not Processed)	Test Positivity %	Pools Submitted	Positive Pools	Pool Positivity %
2021-01-18	571	1	15	0.18%	-	-	-
2021-01-25	612	0	11	0%	-	-	-
2021-02-02	447	1	10	0.22%	-	-	-
2021-03-01	395	2	0	0.51%	81	2	2.47%
2021-03-08	433	0	0	0%	88	0	0%
2021-03-15	450	0	0	0%	91	0	0%
2021-03-22	501	1	2	0.2%	92	1	1.09%
2021-03-29	520	0	0	0%	94	0	0%
2021-04-05	481	0	0	0%	87	0	0%
2021-04-12	495	0	0	0%	94	0	0%
2021-04-26	504	0	0	0%	94	0	0%
2021-05-03	490	0	0	0%	89	0	0%
2021-05-10	475	0	0	0%	84	0	0%
Total	6,549	6	43	0.09%	894	3	0.34%

Public Schools of Brookline Case Counts: Asymptomatic Testing Program Results

Data Last Updated: 5/14/21



COVID-19 CASES: STUDENT ASYMPTOMATIC TESTING

The table outlines the test results of our COVID-19 pooled testing program. For the purpose of this dataset, weeks run Friday to Thursday.

Source: Public Schools of Brookline School Health Services Department

Student Asymptomatic Testing Program Results

In March 2021, the district expanded the asymptomatic testing program to include pooled testing with students with support from the Massachusetts Department of Elementary and Secondary Education (DESE). Pooled testing involves mixing several test samples together in a "pool" and then testing the pooled sample with a PCR test for detection of SARS-CoV-2. The first week of this program launched on Monday, March 8, 2021. Testing was paused for the week of April 19 due to April Vacation.

Week of	Tests Processed	Positive Results	Test Positivity %	Pools Submitted	Positive Pools	Pool Positivity %
2021-03-08	157	0	0%	19	0	0%
2021-03-15	395	1	0.25%	47	1	2.13%
2021-03-22	1,463	0	0%	161	0	0%
2021-03-29	1,474	0	0%	121	0	0%
2021-04-05	2,014	0	0%	214	0	0%
2021-04-12	2,180	2	0.09%	225	2	0.89%
2021-04-26	2,256	0	0%	312	0	0%
2021-05-03	2,348	0	0%	234	0	0%
2021-05-10	2,271	0	0%	241	0	0%
Total	14,558	3	0.02%	1,574	3	0.19%

Public Schools of Brookline Case Counts: Asymptomatic Testing Program Results

Data Last Updated: 5/14/21

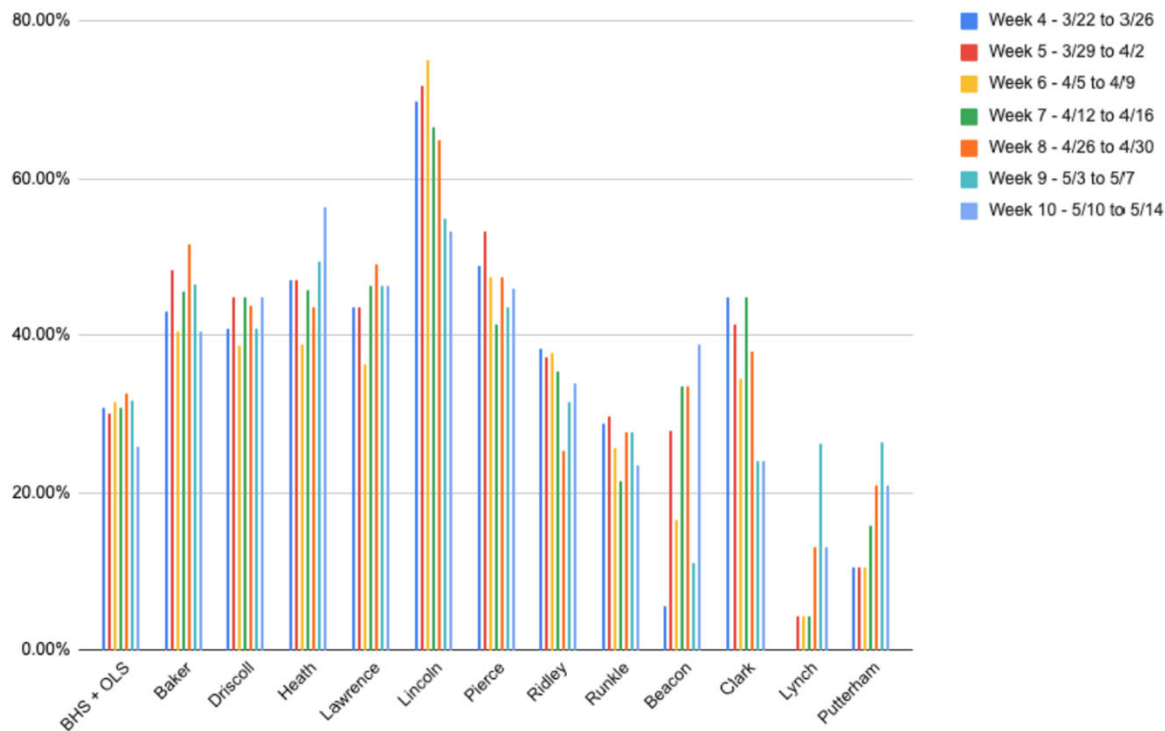


COVID-19 TESTING: PARTICIPTION RATE

The table outlines the test results of our COVID-19 pooled testing program. For the purpose of this dataset, weeks run Friday to Thursday.

Source: Public Schools of Brookline School Health Services Department

Staff Participation Rate (%) for Pooled Testing



Total tests (staff and students) processed to date (3/2 to 5/14)*: 19,303

Total positives (staff and students) to date (3/2 to 5/14): 6

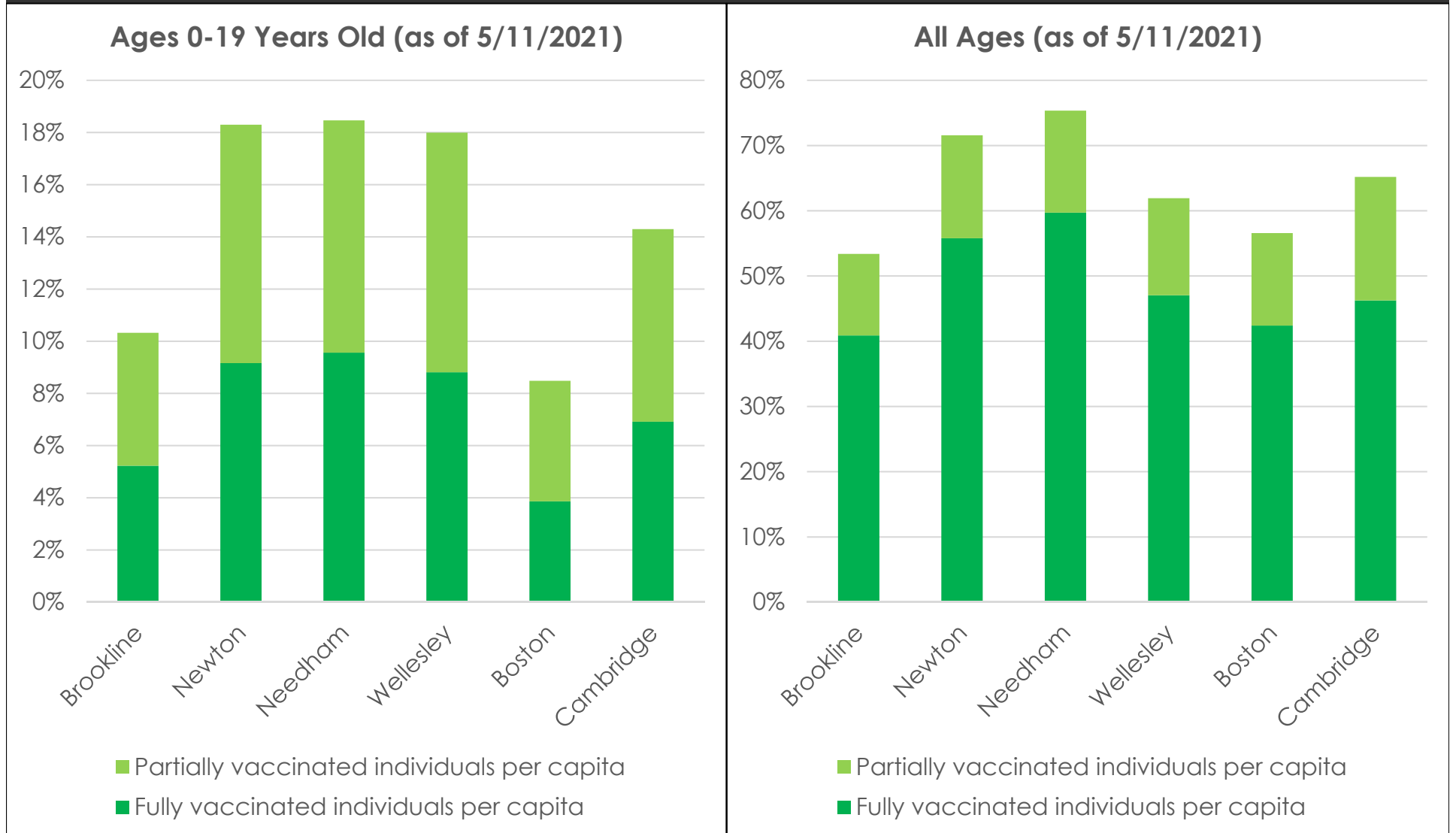
Cumulative individual test positivity: 0.03%

*Testing paused from 4.16 - 4.22 due to April Vacation.

Summary of PSB's COVID-19 Experience to Date (through 5/13/2021)

- Since the fall:
 - **155,000+ staff member-days** in buildings
 - **420,000+ student-days** in buildings
- **300 known COVID-19 cases among PSB students and staff**
 - Contact tracing completed by local health dept. + school nursing team
 - Nearly all believed to be community-acquired (e.g., some individuals were in 100% remote cohorts)
 - **70 were present in buildings during likely contagious periods** (48 hours prior to symptom onset/COVID+ test)
- **Very few instances of suspected in-school transmission:**
 - ~4 likely or “can’t rule out” cases
 - Just ~2 of 376 (0.5%) of in-school close contacts have tested positive or developed COVID-19-consistent symptoms

MA DPH Vaccination Rate Data



Data source: <https://www.mass.gov/info-details/massachusetts-covid-19-vaccination-data-and-updates>

PSB Vaccination Program

- We are happy to announce that the Public Schools of Brookline are partnering with Pelmeds Pharmacy to offer the 2 dose Pfizer Covid-19 vaccination series to our students ages 12 and above. Their team of vaccinators will come onsite to our school to provide immunizations on May 20th, May 26th and May 27th.
- **May 20** Brookline High School 1:00pm-5:00pm
- **May 26** Baker School 12:30pm-4:30pm
- **May 27** Ridley School 2:30pm-6:00pm
- **While the vaccine is strongly encouraged, it is not required at this time.**

PSB End of Year Celebration Guidelines

- No field trips or activities requiring transportation
- Health and Safety: All health and safety protocols as outlined by DESE and DPH must be followed including: wearing of properly fitting mask, hand hygiene, social distancing, staying home if ill, limiting use of shared items.
 - Signed health attestations
 - Record of attendees including contact information for contact tracing purposes
 - Signage for social distance, masks, hand sanitizer stations
 - Plan for attendee who becomes ill
 - Food services and distribution procedures: individually packaged or boxed items
 - Must be 6-feet apart while unmasked and eating
 - Arrival and exit procedures

PSB End of Year Celebration Guidelines, ctd.

- Hygiene:
 - ❑ Masks must be worn at all times and be well fitting, covering nose and mouth
 - ❑ Access to hand washing and hand sanitizer stations
 - ❑ Limit sharing: Sharing materials is discouraged, particularly of items that are difficult to clean or disinfect (i.e. soft materials). If shared, they must be cleaned before and after being used by other students.
 - ❑ Enforcement of good hand hygiene before and after use.
 - ❑ An EPA approved disinfectant should be made available
- Eating areas for students: If students will be unmasked to eat, there is a strict requirement of 6-feet of physical distance between each student. Individuals must be seated while eating. Adequate adult supervision required to ensure 6 feet of distance.

PSB End of Year Celebration Guidelines, ctd.

- Food: Individually packaged or boxed
- Time: 2- 2 ½ hour time limit
- Venue: Outside preferred. Must be able to ensure social distancing and adherence to capacity limits
- Supervision: Provide adequate adult supervision to ensure adherence to health and safety guidelines

PSB End of Year Celebration Guidelines, ctd.

- Event Guidance: <https://www.mass.gov/info-details/safety-standards-and-checklist-indoor-and-outdoor-events>
- Capacity: Effective on May 29, subject to public health and vaccination data:
 - Gathering limits will increase to 200 people indoors and 250 people outdoors for event venues, public settings and private settings.
 - Must be able to maintain 3 feet of distance while masked

PSB 8th Grade Graduation Plans

Capacity Limits and Operations

- Ceremony will be kept as brief as possible.
- No food or drink will be permitted during ceremony
- Each household must register guests. Registration includes guest contact information as well as attest at the time of registration/ticketing that they will not attend the Commencement if they are demonstrating symptoms as detailed in the guidance.
- Faculty, administrators, and speakers will register. Registration includes guest contact information as well as attest at the time of registration/ticketing that they will not attend the Commencement if they are demonstrating symptoms as detailed in the guidance.
- Music will be recorded or played by 2-3 string instruments

PSB 8th Grade Graduation Plans, ctd.

Social Distancing

- Students will be seated 6 feet apart and masked
- Guests who are not part of the same household/group will be seated at least 6 feet apart from other guests. Maximum of 6 guests per graduate, dependent on ability to maintain spacing.
- Any food post celebration must be individually wrapped. Individuals must be seated while eating. Must have adequate adult supervision to ensure 6 feet of distance

PSB 8th Grade Graduation Plans, ctd.

Hygiene Protocols

- Guests must wear their face coverings at all times
- Graduates must wear their face coverings at all times, except for designated photograph locations
- Graduates will retrieve diplomas from a table, **or** from the principal only
- Hand sanitizer will be available throughout the commencement area
- Social distance and mask reminders will be posted

Cleaning and Disinfecting

- Entire ceremony will be outdoors
- Microphone will be sanitized between speakers

CDC Updates on Surface (Fomite)-Based Transmission Risk (April 5, 2021)



- Quantitative microbial risk assessment (QMRA) study findings suggest that risk of SARS-CoV-2 infection via fomite transmission route is <1 in 10,000 per touch of a contaminated surface.
- “When accounting for both surface survival data and real-world transmission factors, the risk of fomite transmission after a person with COVID-19 has been in an indoor space is minor after 3 days (72 hours), regardless of when it was last cleaned.”
- One QMRA study looked at prevention measures:
 - Good hand hygiene can “substantially reduce” risk of fomite transmission.
 - 1-2x/day surface disinfection “had little impact on reducing estimated risks.”

Sources: <https://www.cdc.gov/coronavirus/2019-ncov/more/science-and-research/surface-transmission.html>;
<https://www.nature.com/articles/d41586-021-00277-8>; [https://www.thelancet.com/journals/laninf/article/PIIS1473-3099\(20\)30678-2/fulltext](https://www.thelancet.com/journals/laninf/article/PIIS1473-3099(20)30678-2/fulltext) | <https://www.nytimes.com/2020/11/18/world/asia/covid-cleaning.html>

CDC Updates on Surface (Fomite)-Based Transmission Risk (April 5, 2021)



- CDC's risk assessment: "The principal mode by which people are infected with SARS-CoV-2 (the virus that causes COVID-19) is through exposure to respiratory droplets carrying infectious virus. It is possible for people to be infected through contact with contaminated surfaces or objects (fomites), but the risk is generally considered to be low."
- CDC's updated recommendations:
 - Routine cleaning (at least 1x/day) with soap/detergent should be enough to further reduce the already low risk of fomite transmission in most cases.
 - When a COVID+ person has been indoors within the last 24 hours, high-touch surfaces within that space should additionally be disinfected.
 - Wear well-fitting masks and improve ventilation wear possible (or else avoid entering contaminated space for 24 hours).
- More specific guidance here: <https://www.cdc.gov/coronavirus/2019-ncov/community/disinfecting-building-facility.html>